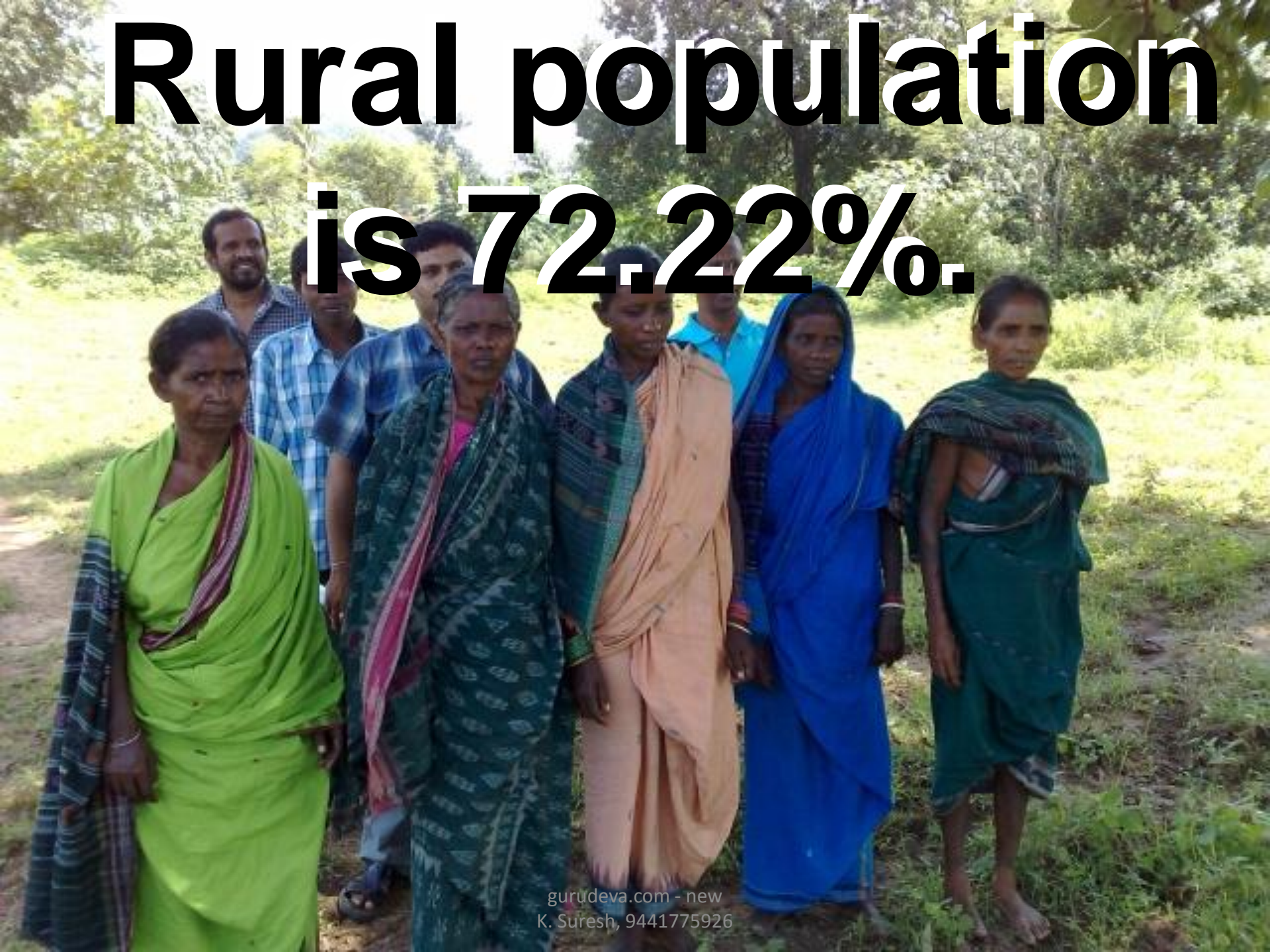


**High Rural And Urban**

**Population Areas**

# Rural population is 72.22%.







**Urban  
popul-  
ation  
is  
27.78%**



# Urban





# Urban







Urban



# Urban





An aerial photograph of a densely populated urban area. A multi-lane highway runs horizontally across the upper third of the image. Below the highway, a residential neighborhood with numerous small houses and trees is visible. In the lower-left quadrant, there are several large, light-colored industrial or commercial buildings. To the right of these buildings, a large parking lot filled with cars is visible. The overall scene depicts a typical suburban or urban landscape with a mix of residential and commercial development.

**Urban**





Urban



# Urban





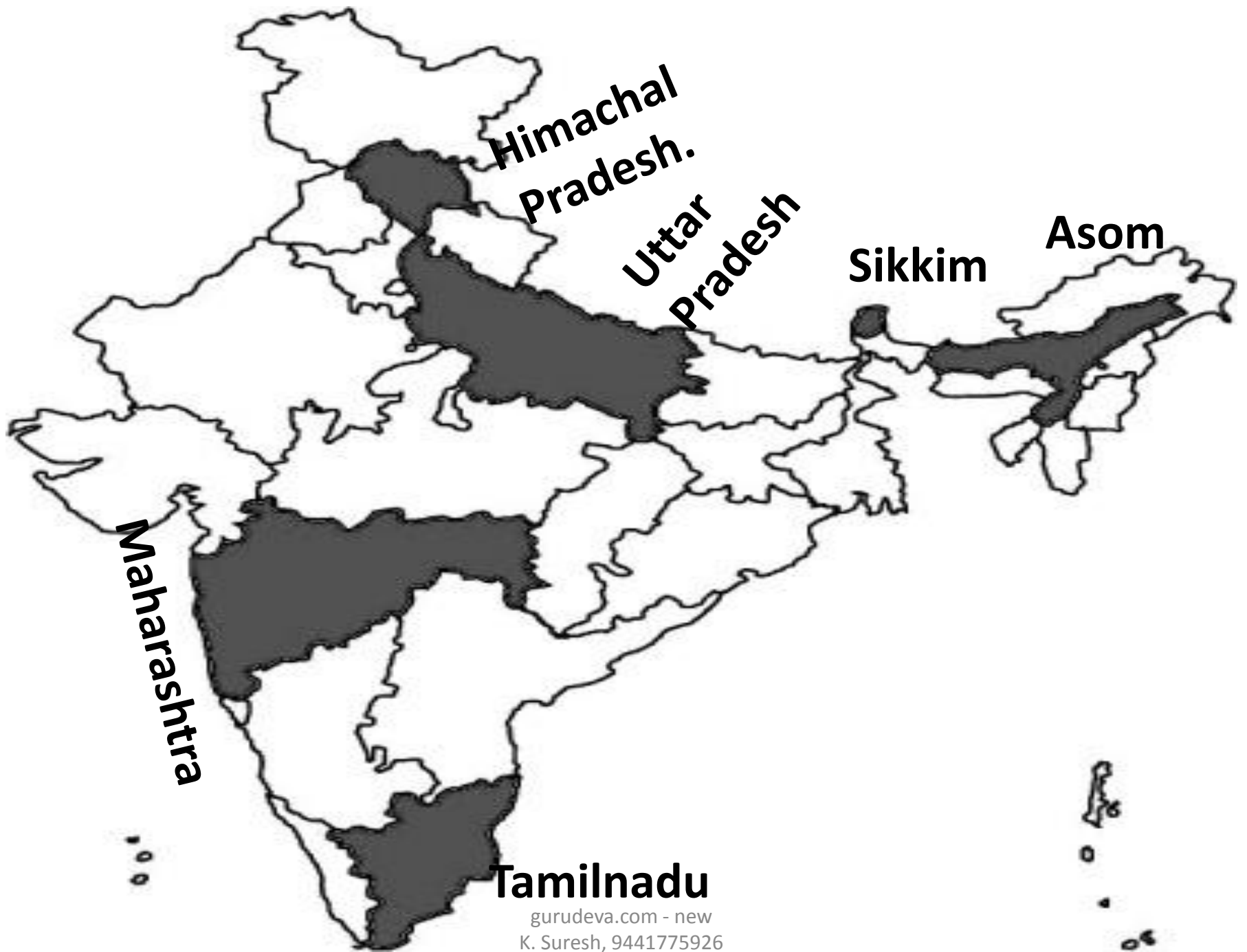
# **• HIGH URBAN POPULATED AREAS ARE**

- 1. Maharashtra.**
- 2. Uttar Pradesh.**
- 3. Tamilnadu.**



- **HIGH RURAL POPULATED AREAS ARE**
- **1. Himachal Pradesh.**
- **2. Sikkim.**
- **3. Assam.**





**Himachal  
Pradesh.**

**Uttar  
Pradesh**

**Sikkim**

**Asom**

**Maharashtra**

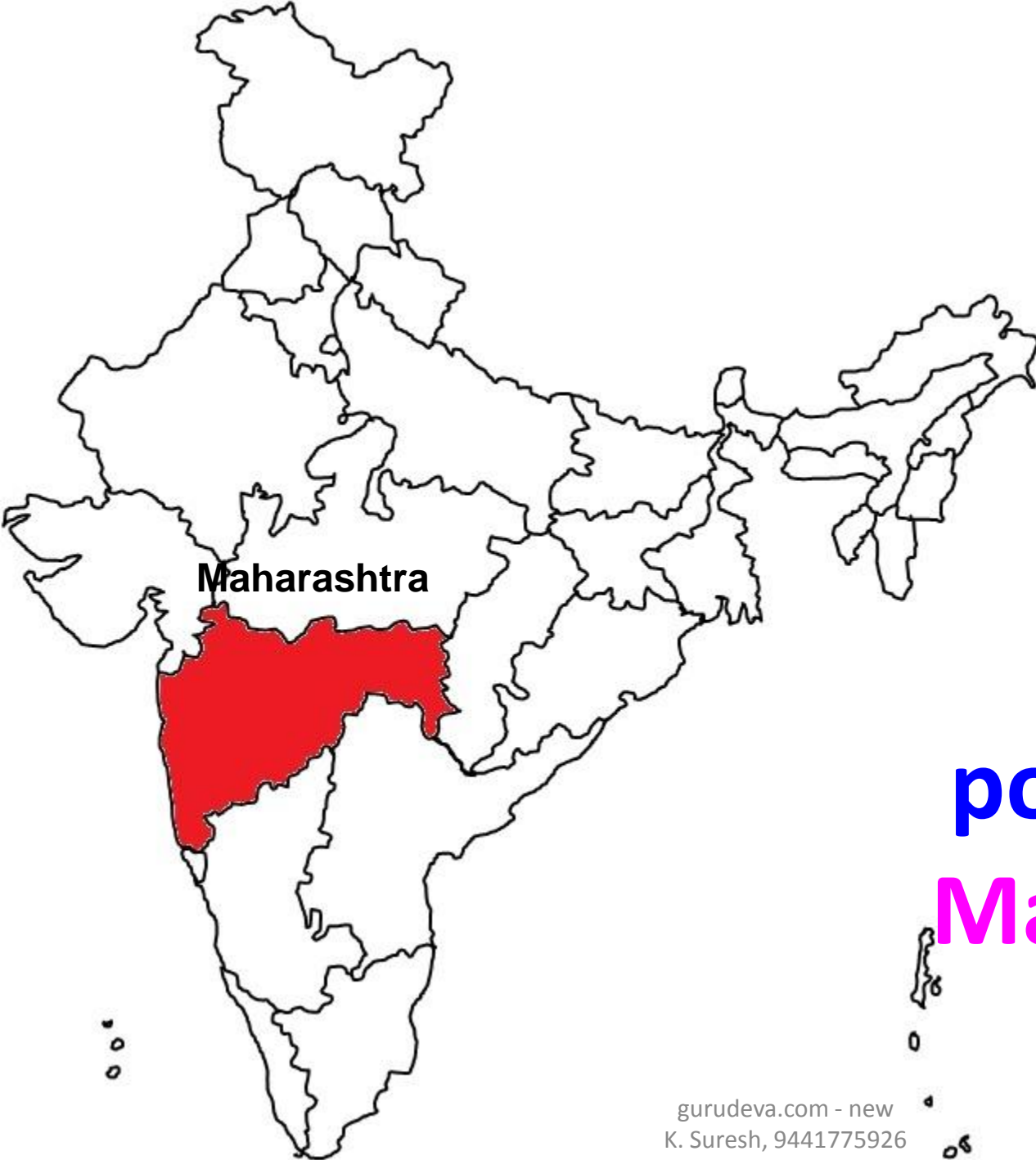
**Tamilnadu**

gurudeva.com - new  
K. Suresh, 9441775926

# RURAL Population







- The state with maximum urban population is Maharashtra.

# Urban





# 5

- The rank of Andhra Pradesh in the level of urbanization Fifth.



Andhra Pradesh



A high-angle, wide shot of a massive crowd of people, densely packed and filling the frame. The crowd is diverse in age and appearance, with many individuals looking towards the camera. The word "Urban" is overlaid in a large, blue, sans-serif font in the upper right quadrant. The background shows some structural elements of a large venue, possibly a stadium or a fairground, with curved metal beams and lights visible at the top.

Urban



# • CAUSES FOR THE RAPID POPULATION GROWTH IN INDIA



# **RAPID POPULATION GROWTH**



# **RAPID POPULATION GROWTH**



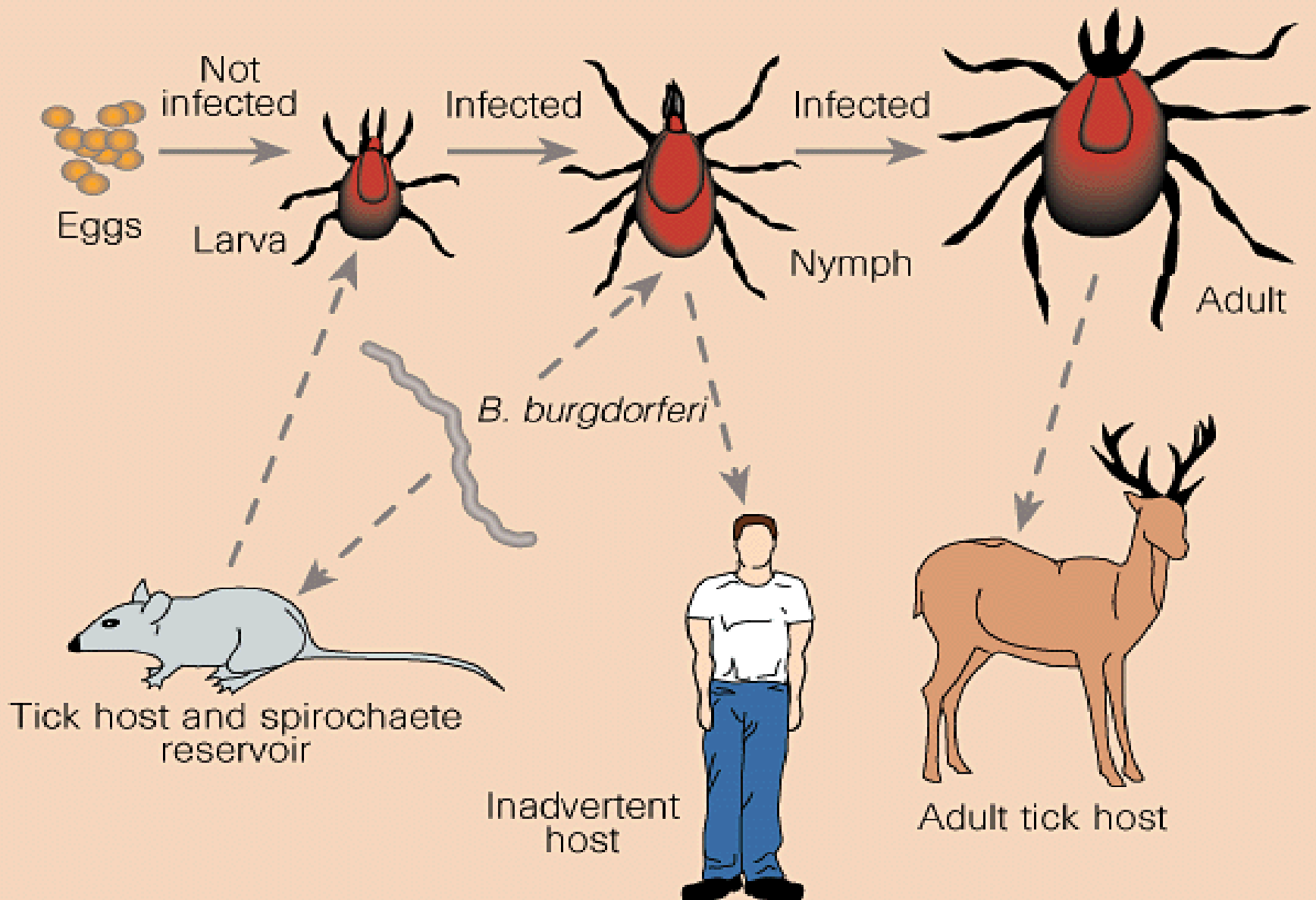


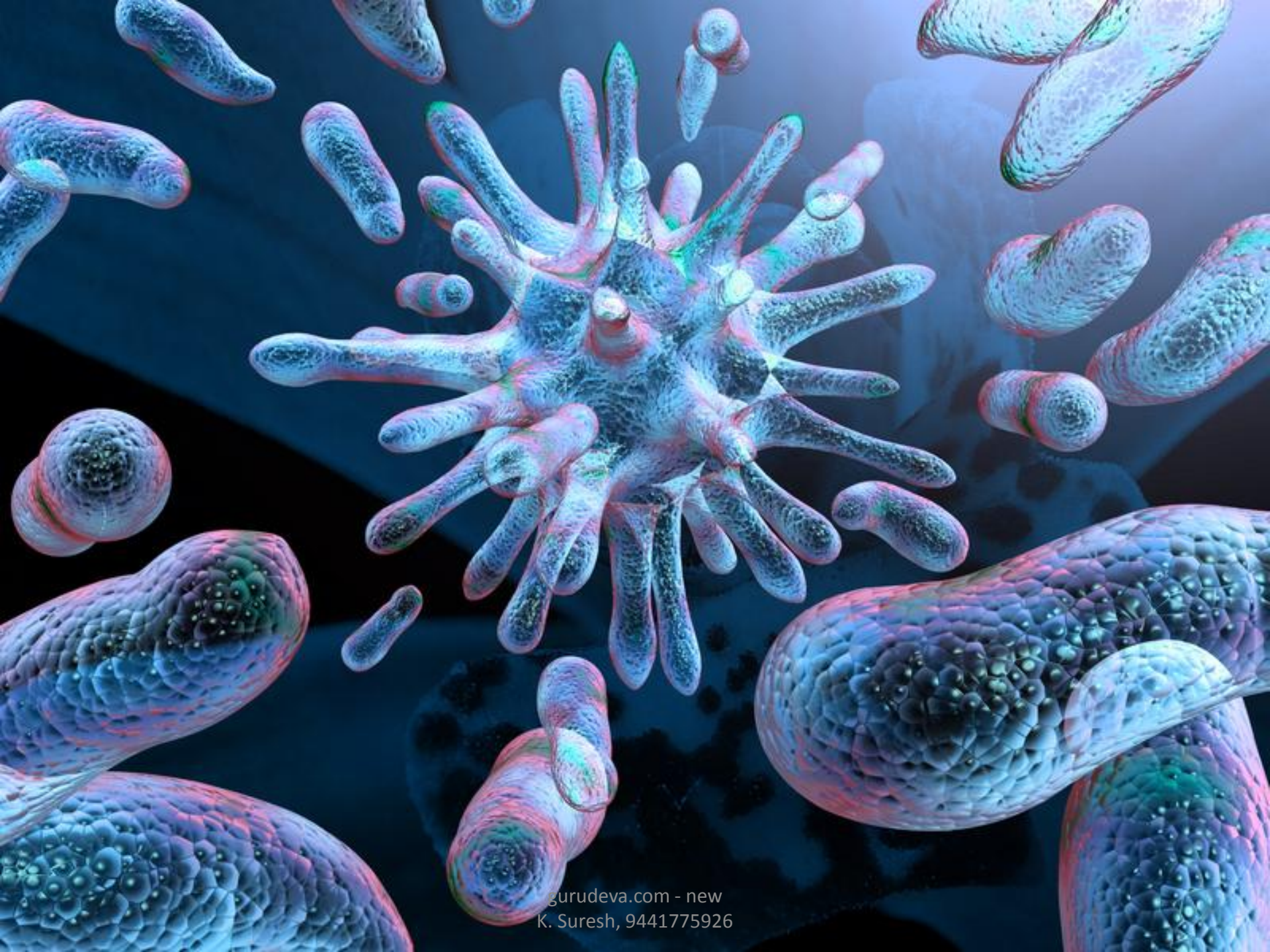
- 1. Control of dangerous diseases
- 2. Droughts and floods were controlled
- 3. Advanced Health care
- 4. Death rate has fallen
- 5. High Birth rate
- 6. Employment opportunities
- 7. Family planning
- 8. Early marriages
- 9. Gap between birth rate and death rate
- 10. Social customs

# **Control of dangerous diseases**

- ***There was effective control of dangerous diseases because of rapid advances in medical science.***





















• **Droughts and Floods were  
controlled**

• **Famines, droughts and  
floods were controlled  
by the Government.**

# FLOODS







# FLOODS



An aerial photograph showing a vast, parched landscape with a network of deep, irregular cracks in the dry, light-colored soil. A young child, wearing a red shirt and dark shorts, is walking away from the viewer towards the left side of the frame. To the right of the child, two small, dark-colored dogs are walking in the same direction. The overall scene conveys a sense of extreme drought and hardship.

# DROUGHTS

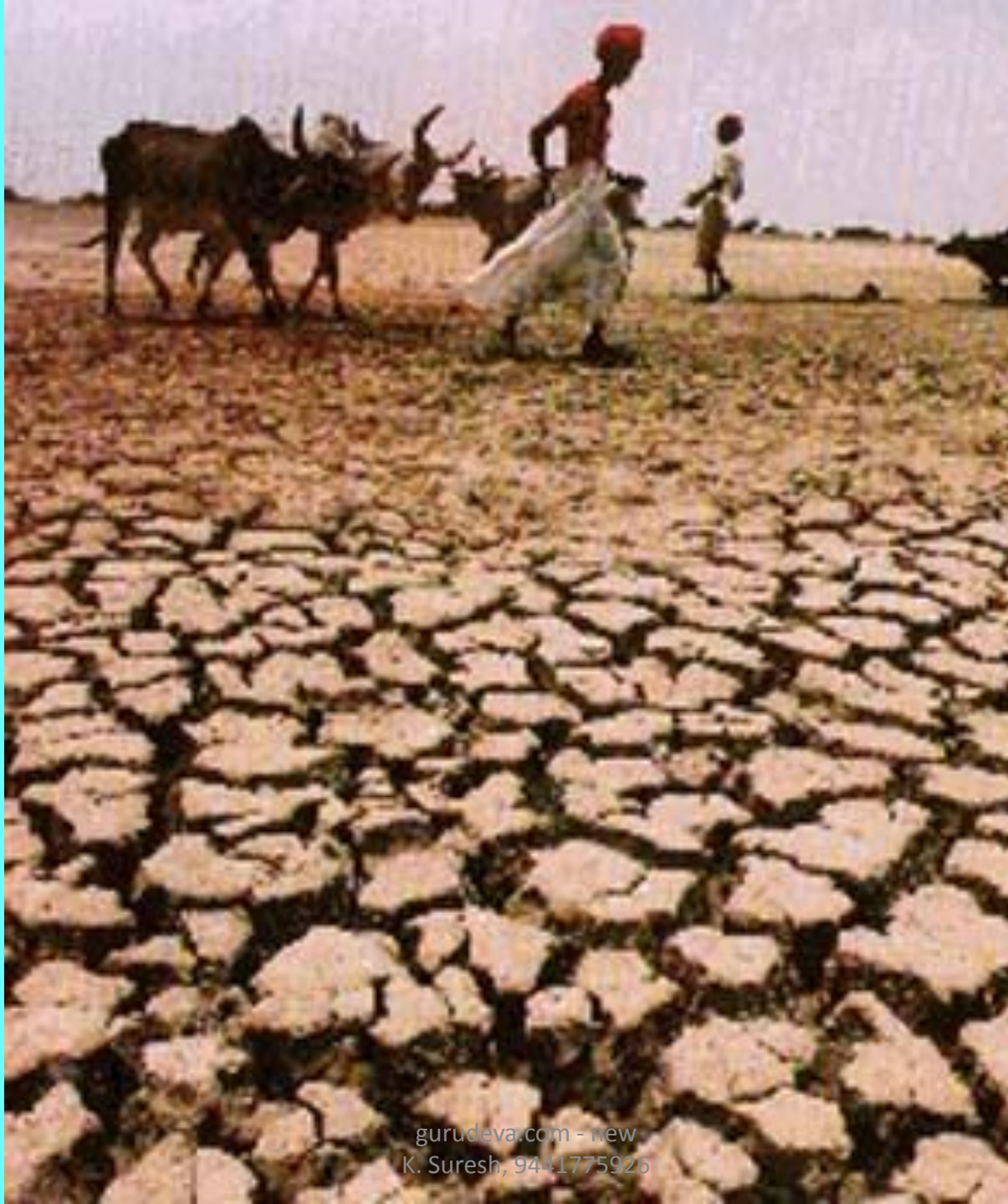




# DROUGHTS



# DROUGHTS





# • **Advanced Health care**

- **Health care was also provided to many parts of the country.**

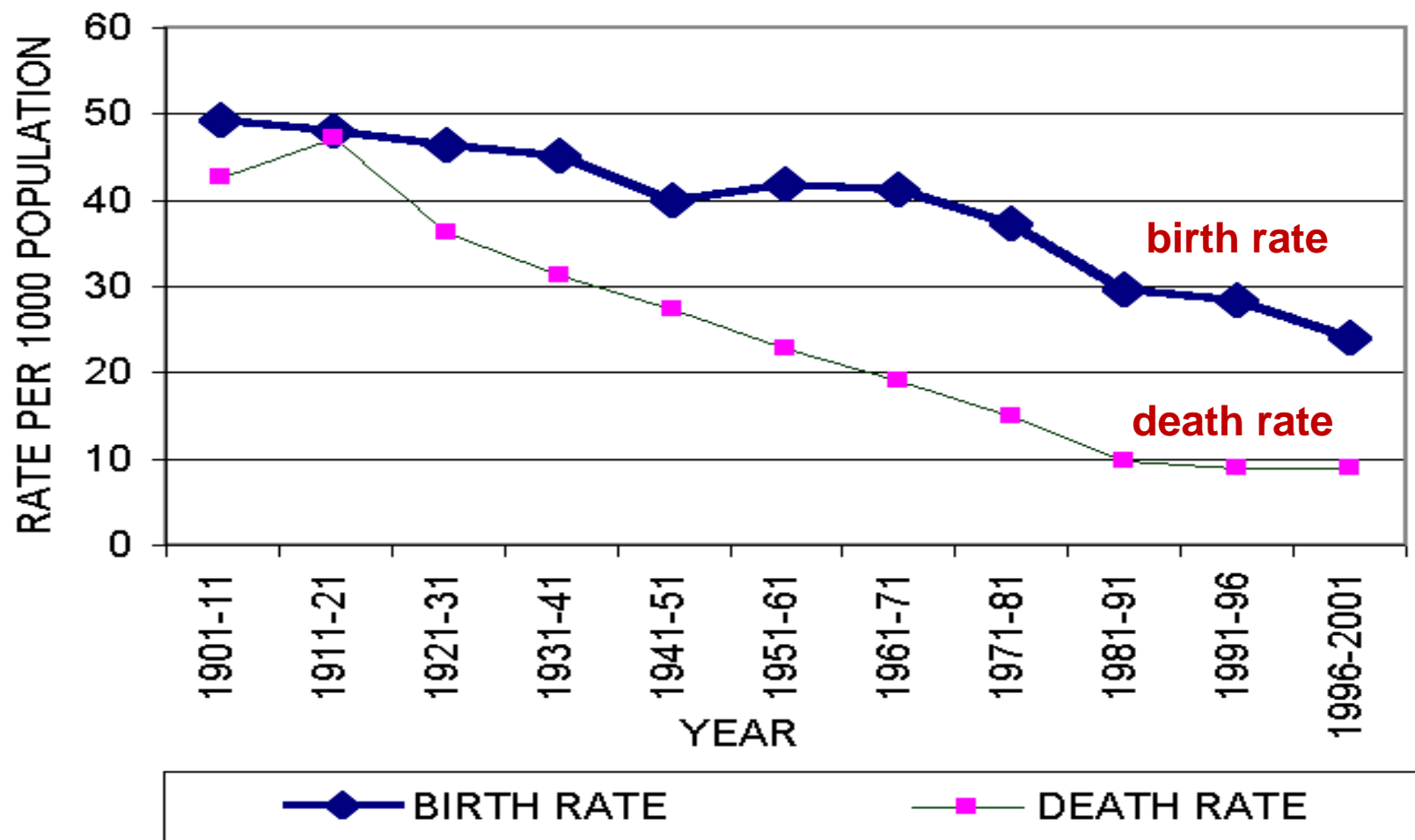


**Advanced Health care**



# **Death rate has Fallen**

- **Due to the advanced health care, death rate in India has fallen.**



Source:- Registrar General India





**death**

# **High Birth rate**

**Due to illiteracy of the people, the high birth rates could not be controlled.**



A newborn baby is lying on its stomach on a white, wrinkled cloth. The baby is looking up with its mouth open, showing its tongue. The word "birth" is written in red text on the baby's back.

**birth**



**birth**



**Employment**

**opportunities**

**The development of  
secondary and tertiary  
sectors created more  
employment  
opportunities.**

# Employment opportunities







# **JOBS**

[gurudeva.com](http://gurudeva.com) - new  
K. Suresh, 9441775926





**Family**

**planning**

**The family planning  
programmes of the  
Government have not  
been very successful.**



f a m i l y

# Family planning

P L A N N I N G





**Early**

**marriages**

**Early marriages are also  
caused to the rapid  
population growth in  
India.**

# Early marriages



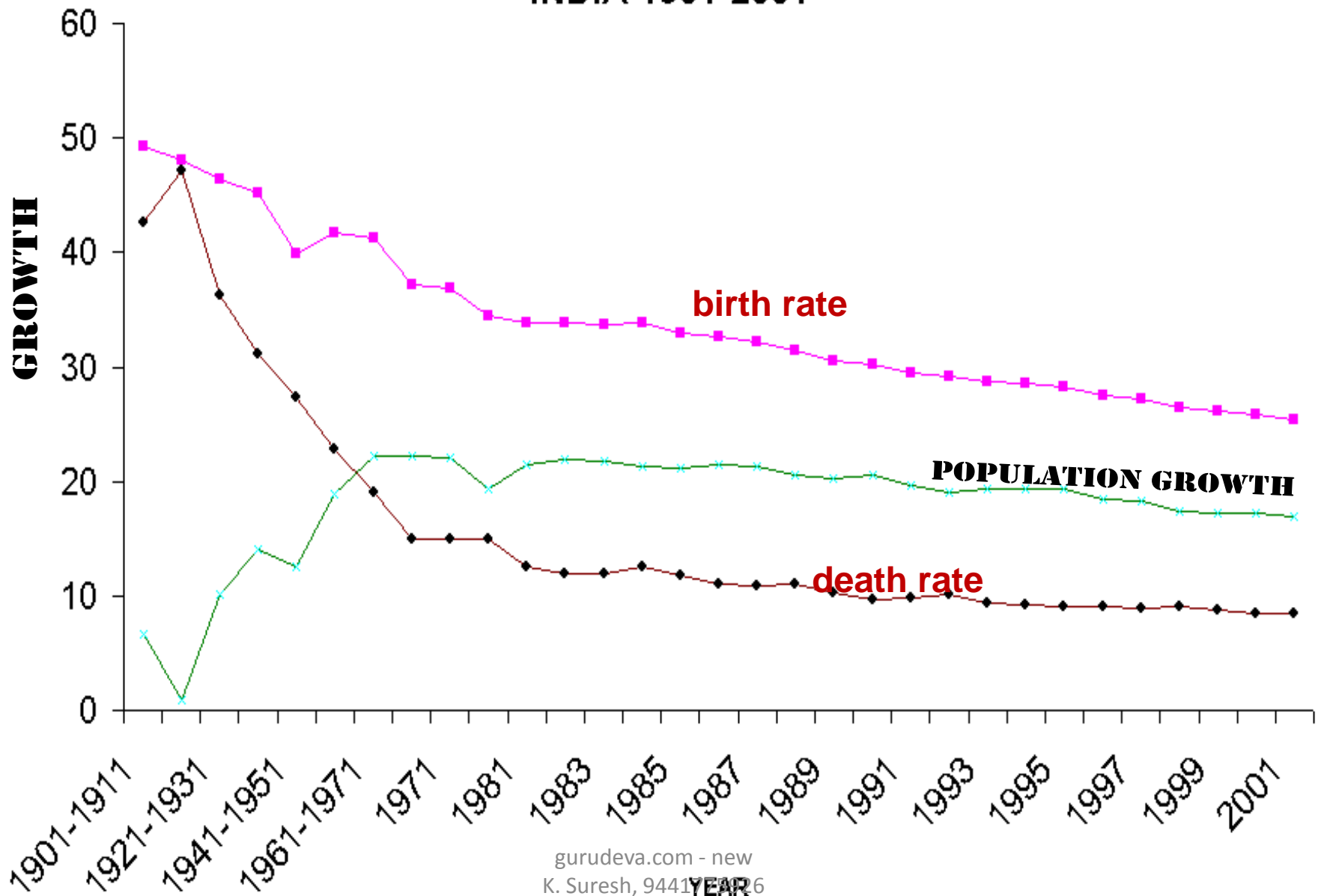


**Gap between birth rate and death rate**

The gap between the birth rate and death rate has widened.

# BIRTH RATE, DEATH RATE AND NATURAL GROWTH RATE IN INDIA 1901-2001

POPULATION GROWTH





**Social**

**customs**

**Due to the social attitude of the people preference given to early marriages and linking to have a son could not be controlled.**





# Early Marriages









**linking to  
have a  
son could  
not be  
controlled**







**POPULATION**

**EXPLOSION**



- *1. The heavy growth of population within a short time is called population explosion.*

POPULATION

EXPLOSION



• ***2. There was a  
population  
explosion in our  
country.***



# POPULATION EXPLOSION



NUNHLUN  
A MINH RUA  
RPUICHUA  
NNA PL